



## COUNCIL REQUEST FOR DECISION

<b>MEETING DATE:</b>	April 23, 2025	<b>PRESENTED BY:</b>	Kylie Rude, CAO
<b>TITLE:</b>	Sidewalk Snow Removal – Mainstreet		
<b>AGENDA ITEM:</b>	7.1		

### BACKGROUND/ PROPOSAL

At the November 17, 2024 Council Meeting, Council passed the following motion:

*“RES 2024000203 -Moved by Mayor Goertz that Administration be directed to continue with snow removal as per the attached map and further that it be funded by a special tax levy in 2025.”*

The snow removal map is attached for reference.

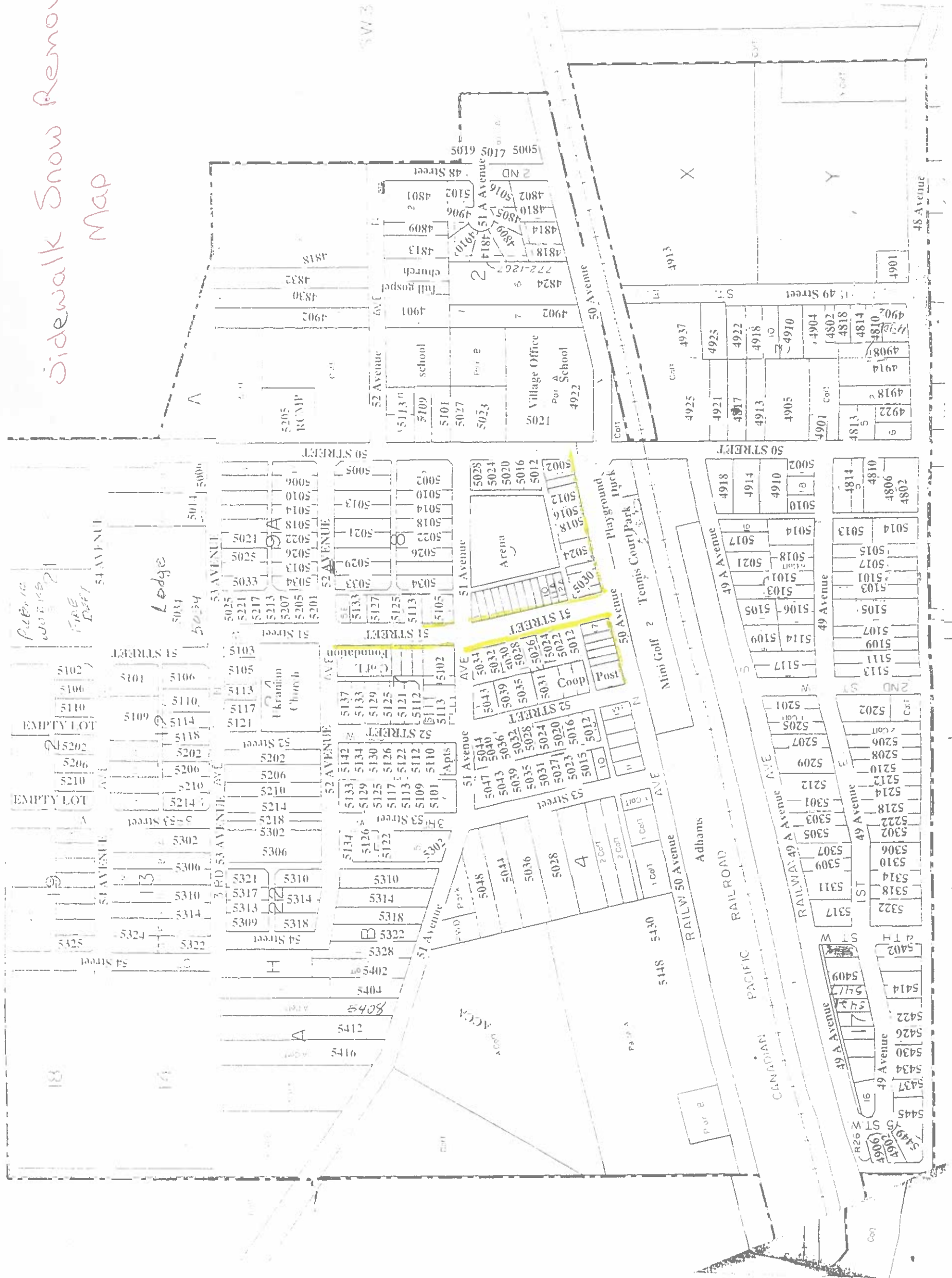
Administration will soon be working on drafting the 2025 tax bylaw; therefore, following up with additional information might be valuable for Council to consider.

- Prior to 2023, sidewalk snow removal was completed for mainstreet businesses who were charged a special tax annually. The cost in 2022 was indicated to be \$7,150 which was split amongst businesses based on frontage.
- Special taxes are authorized by section 382 of the Municipal Government Act. Section 382 (1)(f) is likely to have been the section applied for sidewalk snow removal - “a tax to cover the cost of repair and maintenance of roads, boulevards, sewer facilities and water facilities.” Please note, this section does not specifically mention sidewalk maintenance; however, the definition of “roads” in the MGA includes “any structure incidental to a public road” so sidewalks MAY fit within that definition.
- After review with our financial consultant, alternatives have been proposed to gather the cost of sidewalk snow removal – which can also be done by invoicing the mainstreet businesses (all those on the map) for the actual cost of snow removal through a set hourly rate. Non-payment of such invoices could then be added to the tax roll if not paid.
  - This could allow Administration the opportunity to gather a better cost estimate for the cost of this service
  - Keep in mind that costs may vary greatly year to year depending on amount of snow falls
  - Invoicing the costs of snow removal would require public works to track the amount of time spent on mainstreet sidewalks to provide accurate invoicing



- Administration can continue with the previous direction or can move forward with alternatives.
- If keeping with the current direction of funding the snow removal through a special tax, the previously estimated cost of \$7,150 is unlikely to cover the cost of labor, equipment and fuel to complete the snow removal.

Sidewalk Snow Removal  
Map





**COUNCIL  
REQUEST FOR DECISION**

<b>MEETING DATE:</b>	April 23, 2025	<b>PRESENTED BY:</b>	Kylie Rude, CAO
<b>TITLE:</b>	Water Reservoir Report		
<b>AGENDA ITEM:</b>	7.2		

**BACKGROUND/ PROPOSAL**

At the December 17, 2024 Council meeting, the following motion was made:

***RES 2024000228- Moved by Mayor Goertz that administration be directed to provide reports of water reservoir maintenance and condition. CARRIED***

The attached report is provided as a response.

**RECOMMENDED ACTION**

That the water reservoir report, dated March 10, 2023, be accepted as information.



## Aquatech Diving & Marine Services Ltd

Box 369 Eckville Alberta

T0M 0X0

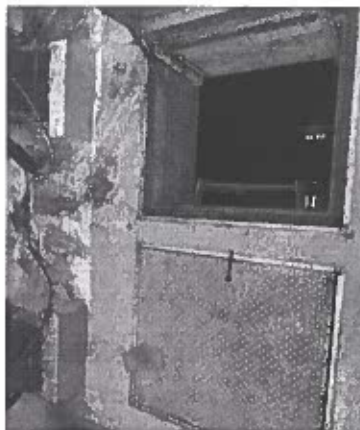
[info@aquatechdiving.ca](mailto:info@aquatechdiving.ca)

[www.aquatechdiving.ca](http://www.aquatechdiving.ca)

March 10, 2023

### Andrew

The following report is comprised from video taken from a DTG3 inspection ROV. The reservoir is divided into 2 cells. Each cell will be reported separately. Hatches were of a decent size for diver entry. Water clarity was good with a depth of 1.7m at time of inspection.



### North Cell

#### Ladder

The ladder in the North cell is corroded but did not appear to be compromised.

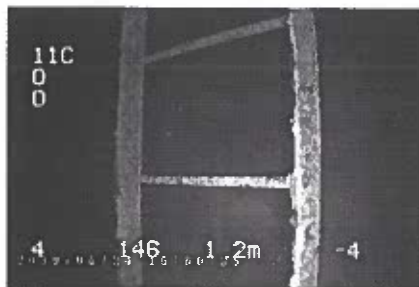


Image from 2019

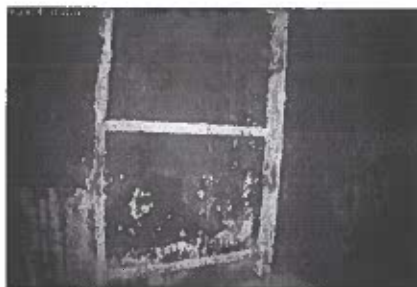


Image from 2023



### Sediment

Sediment levels were not high. 1-2mm at most.



Image from 2019



Image from 2023

### Pumps

There are 2 pumps in this chamber and both appear to be in good condition.



### Pipes & Valves

The pipes in the chamber appear to be in good condition. The equalizer valve has some corrosion but appeared to be in working order.







### Infrastructure

The infrastructure in the North cell appeared to be in good shape. No evidence of cracking or spalling was evident in the wall, ceiling, or floor.



### South Cell

#### Ladder

The ladder in the South cell is comparable to the North one. Surface rusting.



Image from 2019

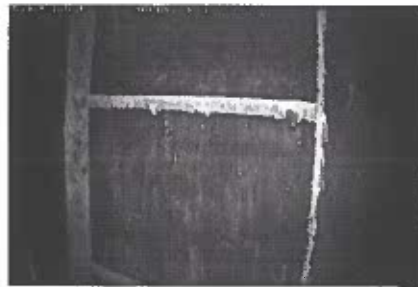


Image from 2023

## Sediment

Sediment levels were still low from 2019. Small pile in the NE corner.



## Pumps

There are 2 pumps in the chamber in a sump. The larger pump has some rusting but looked to be ok.



## Pipes & Valves

Pipes and valves in the chamber had some surface rust but were ok otherwise.





### Infrastructure

There were some small cracks in the ceiling and wall but did not appear to be an issue.



### Conclusion

The condition of the Andrew reservoir was good and did not require a cleaning at this time. Recommend another inspection in 2-3 years to determine buildup.





**COUNCIL  
REQUEST FOR DECISION**

<b>MEETING DATE:</b>	April 23, 2025	<b>PRESENTED BY:</b>	Kylie Rude, CAO
<b>TITLE:</b>	Special Council Meeting		
<b>AGENDA ITEM:</b>	9.1		

**BACKGROUND/ PROPOSAL**

To accommodate upcoming conversations around the 2025 tax bylaw and any amendments that may be needed to the operating budget, Administration is proposing a Special Council Meeting in mid May. Some possible options are:

- Daytime on Monday, May 12
- Wednesday May 15 – day or evening
- Friday May 17 – day or evening
- Daytime on Tuesday May 20

**RECOMMENDED ACTION**

That a special council meeting be held on \_\_\_\_\_.



**COUNCIL  
REQUEST FOR DECISION**

<b>MEETING DATE:</b>	April 23, 2025	<b>PRESENTED BY:</b>	Kylie Rude, CAO
<b>TITLE:</b>	Assessment Information		
<b>AGENDA ITEM:</b>	9.2		

**BACKGROUND/ PROPOSAL**

Administration has attached the assessment growth data provided by the assessor which shows an increase in assessment values.

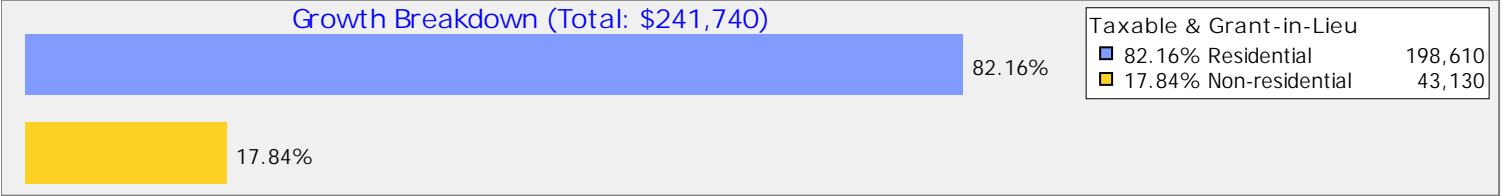
Please note, we are awaiting an updated report that reflects the exact breakdown of the newly created subclasses; however, the totals remain.

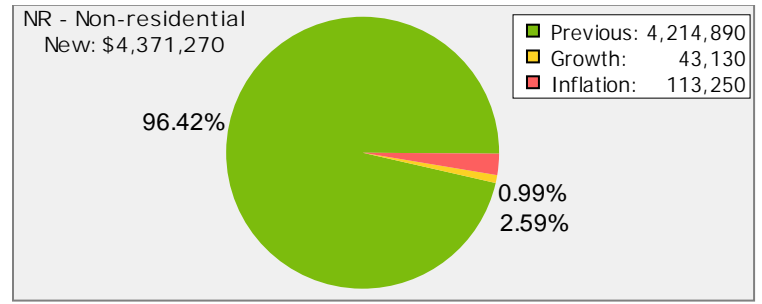
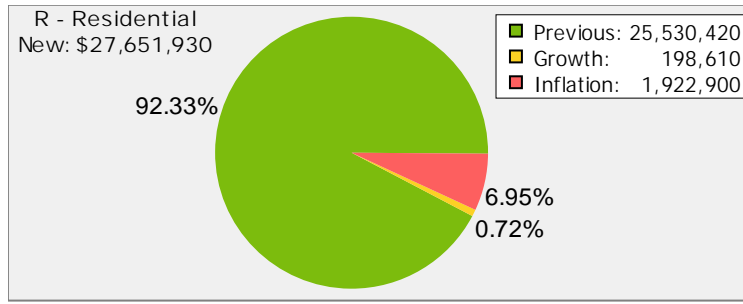
Reminder – assessment values are multiplied by the tax rates set by Council through bylaw to determine municipal property taxes.

**RECOMMENDED ACTION**

That the assessment information be accepted as information.

Property Description	Grand Totals				
	Previous (2023)	New (2024)	Growth	Inflation	
Taxable					
NR Non-residential	4,157,870	4,312,220	43,130	111,220	2.7%
R Residential	25,232,670	27,340,020	198,610	1,908,740	7.6%
Taxable total:	29,390,540	31,652,240	241,740	2,019,960	6.9%
Grant-In-Lieu					
NR Non-residential	57,020	59,050	0	2,030	3.6%
R Residential	297,750	311,910	0	14,160	4.8%
Grant-In-Lieu total:	354,770	370,960	0	16,190	4.6%
Exempt					
NR Non-residential	5,628,060	5,788,610	164,270	-3,720	-0.1%
R Residential	806,670	824,160	0	17,490	2.2%
Exempt total:	6,434,730	6,612,770	164,270	13,770	0.2%
Total:	36,180,040	38,635,970	406,010	2,049,920	5.7%
Taxable & Grant-in-Lieu					
NR Non-residential	4,214,890	4,371,270	43,130	113,250	2.7%
R Residential	25,530,420	27,651,930	198,610	1,922,900	7.5%
Taxable & Grant-in-Lieu total:	29,745,310	32,023,200	241,740	2,036,150	6.8%







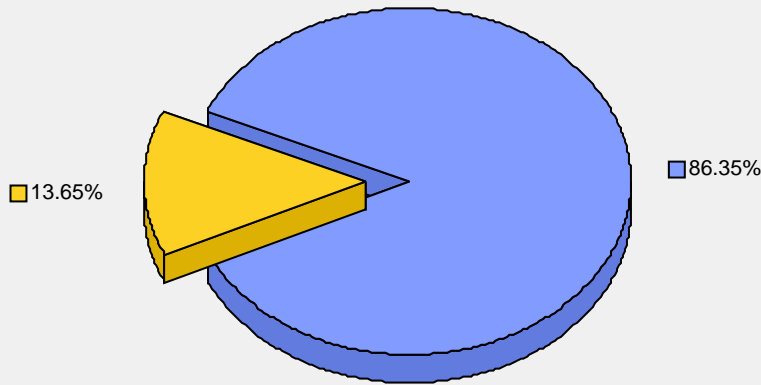
## Municipal Assessment

<u>Code</u>	<u>Description</u>	<u>Records</u>	<u>Status</u>	<u>Land</u>	<u>Impr.</u>	<u>Other</u>	<u>Total</u>
1	Residential Land with Buildings	256	T	4,543,010	22,009,580	0	26,552,590
5	Vacant Residential Land	41	T	787,430	0	0	787,430
24	Commercial Land with Buildings	48	T	463,640	3,784,500	0	4,248,140
25	Vacant Commercial Land	10	T	64,080	0	0	64,080
Taxable Total:		355		5,858,160	25,794,080	0	31,652,240
<u>Code</u>	<u>Description</u>	<u>Records</u>	<u>Status</u>	<u>Land</u>	<u>Impr.</u>	<u>Other</u>	<u>Total</u>
88	Federal GIL Comm. Improved	1	G	8,070	50,980	0	59,050
90	Federal GIL Res Improved	2	G	29,780	282,130	0	311,910
Grant-In-Lieu Total:		3		37,850	333,110	0	370,960
Sub Total:		358		5,896,010	26,127,190	0	32,023,200
<u>Code</u>	<u>Description</u>	<u>Records</u>	<u>Status</u>	<u>Land</u>	<u>Impr.</u>	<u>Other</u>	<u>Total</u>
43	Church Land Exempt	1	E	18,380	0	0	18,380
44	Church Exempt With Buildings	4	E	99,190	188,010	0	287,200
46	Community Club Exempt With Buildings	4	E	56,020	753,240	0	809,260
61	County Land Vacant Exempt	5	E	166,660	0	0	166,660
62	County Land with Buildings Exempt	2	E	10,400	134,100	0	144,500
86	A.H.C. with Buildings	1	E	22,400	356,400	0	378,800
97	Town Vacant Land Exempt	30	E	445,360	0	0	445,360
98	Town Exempt with Buildings	10	E	313,160	4,049,450	0	4,362,610
Exempt Total:		57		1,131,570	5,481,200	0	6,612,770
For Municipal Assessment:		415		7,027,580	31,608,390	0	38,635,970
Grand Totals							
Taxable Total:		355		5,858,160	25,794,080	0	31,652,240
Grant-In-Lieu Total:		3		37,850	333,110	0	370,960
Taxable & Grant-in-Lieu Total:		358		5,896,010	26,127,190	0	32,023,200
Exempt Total:		57		1,131,570	5,481,200	0	6,612,770
Parcels: 409		415		7,027,580	31,608,390	0	38,635,970

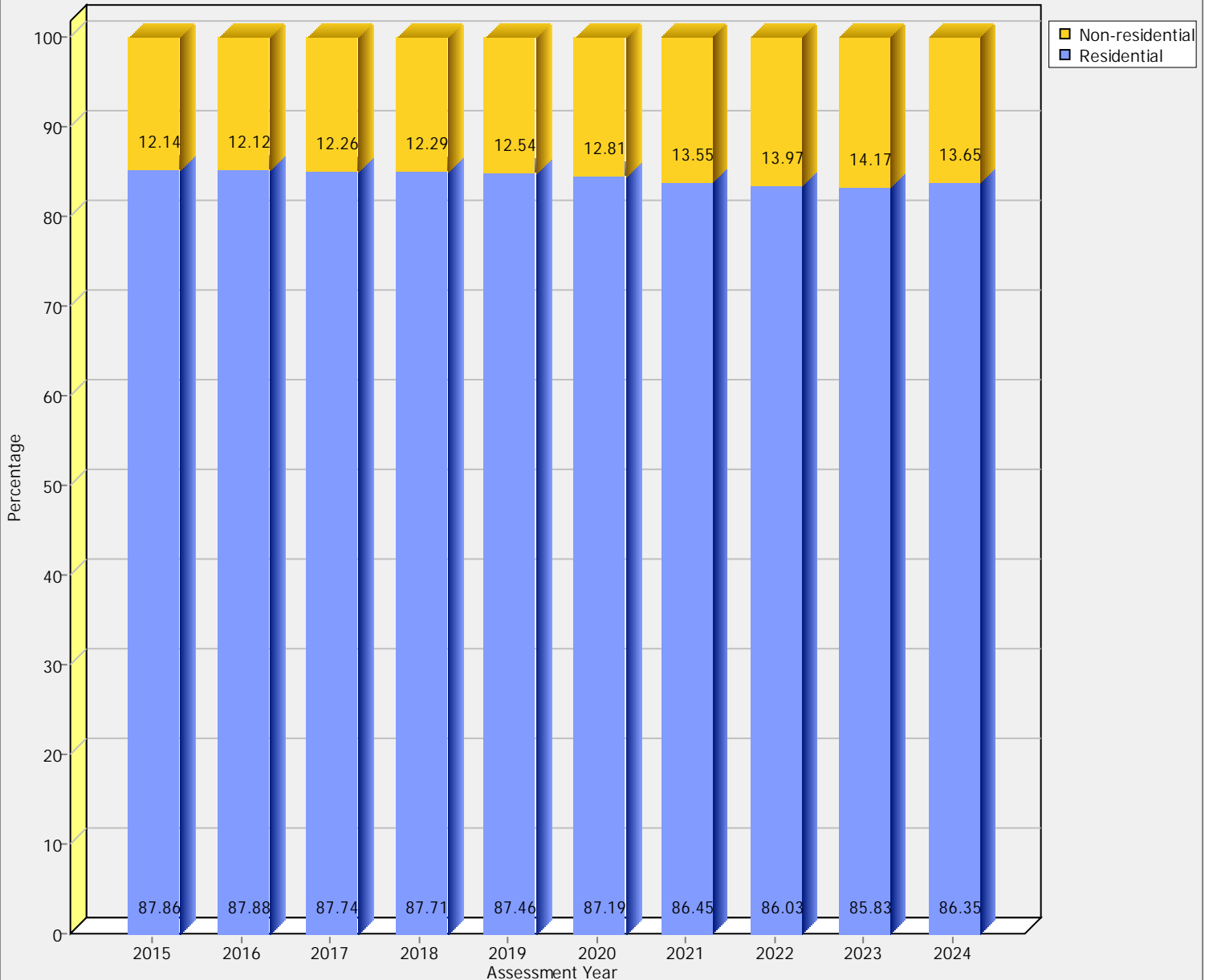
## Assessment Breakdown by Property Description

Total: 32,023,200

Taxable & Grant-in-Lieu	
13.65% Non-residential	4,371,270
86.35% Residential	27,651,930

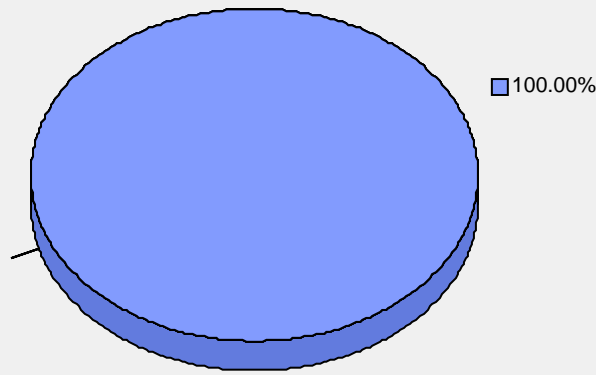


## Total Breakdown of percentage by year for Property Description



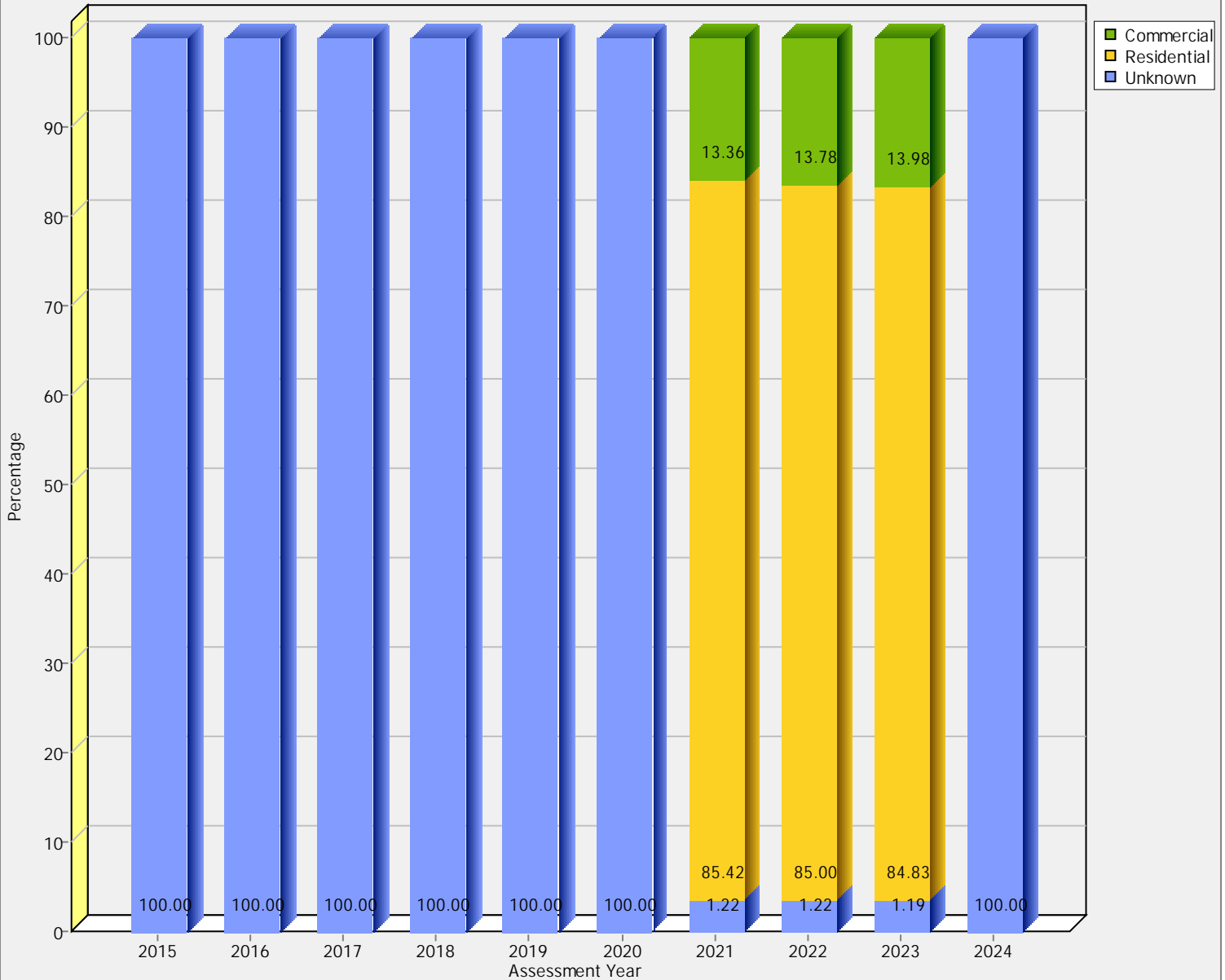
## Assessment Breakdown by Mill Codes

Total: 32,023,200

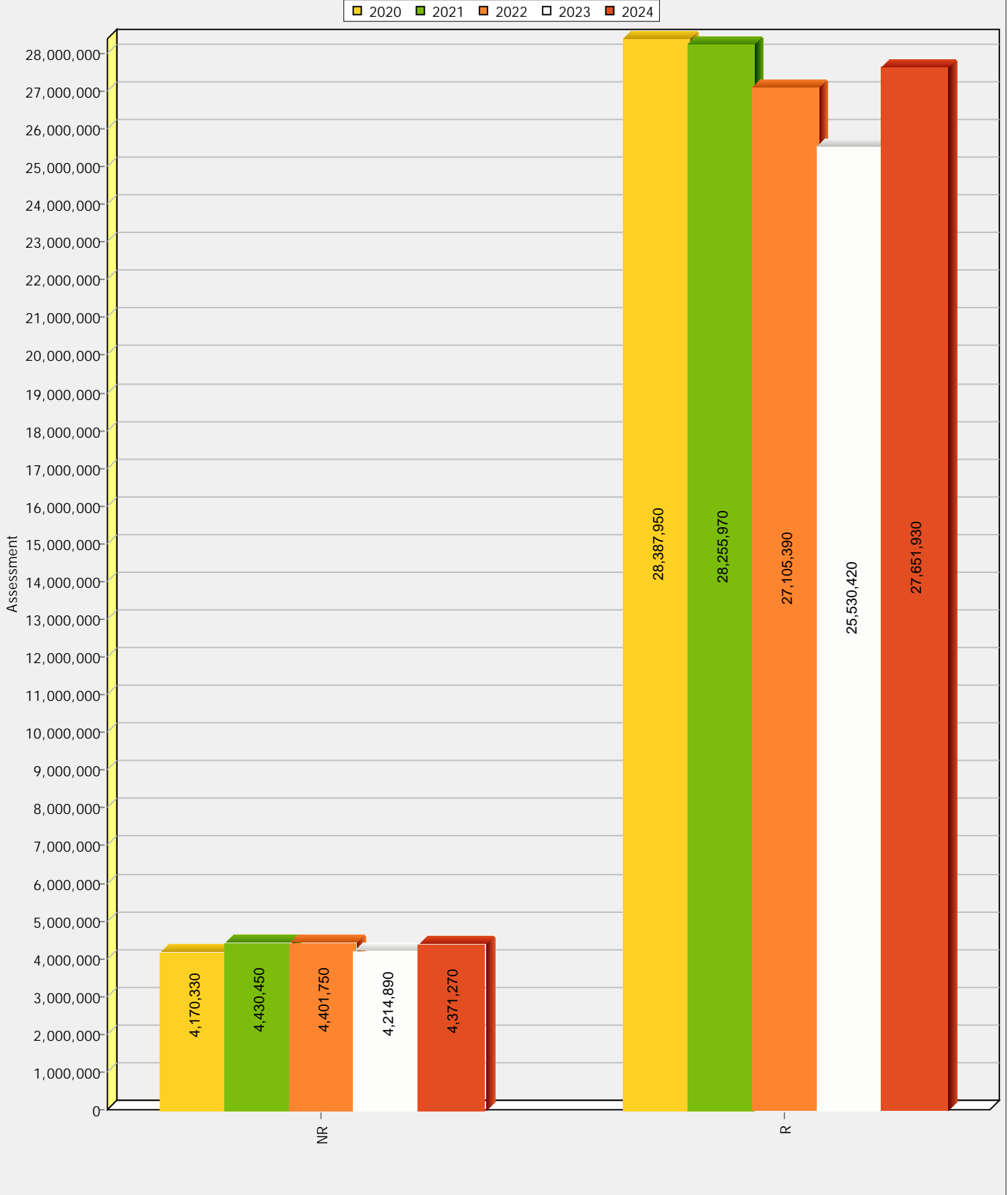


Taxable & Grant-in-Lieu		
0.00% Commercial		0
0.00% Residential		0
100.00% Unknown		32,023,200

## Total Breakdown of percentage by year for Mill Codes



Comparison of total taxable assessment (Supplementary not included)





ALBERTA

MUNICIPAL AFFAIRS

*Office of the Minister*

*MLA, Calgary-Hays*

AR118482

March 14, 2025

Dear Chief Elected Officials:

As you know, my colleague, the Honourable Nate Horner, President of Treasury Board and Minister of Finance, tabled *Budget 2025* in the Alberta Legislature on February 27. I am writing to share further information regarding *Budget 2025* as related to education property tax (EPT).

*Budget 2025* takes an important step toward stabilizing operational funding for education systems across Alberta. Historically, approximately one-third of operational funding for Alberta Education came from the EPT municipalities collect from their rate payers on behalf of the province. In recent years, the proportion that EPT contributes to funding the operations of Alberta Education has decreased to less than 30 per cent. Through *Budget 2025*, the Government of Alberta is increasing the proportion of Alberta Education's operating budget covered by EPT to 31.6 per cent in 2025/2026 and back to 33 per cent in 2026/2027.

To provide Alberta's public education system with a stable and sustainable source of funding and meet the demands of increased student enrollment, EPT revenue will increase by 14 per cent from last year, to a total of \$3.1 billion. This increase will be reflected on the property tax bills that municipalities send to property owners in 2025.


The Ministry of Municipal Affairs sent EPT requisitions to all municipal administrations, informing them of their share of the provincial EPT. For more information on EPT, including a fact sheet (Attachment 1) and the EPT Requisition Comparison Report (Attachment 2), please visit [www.alberta.ca/property-tax](http://www.alberta.ca/property-tax) and click on "Education property tax."

Municipalities across Alberta can inform residents that a portion of their property taxes goes directly to the provincial government to help pay for the operations of Alberta's education system. Many municipalities do this by adding a note to their property tax bills sent through the mail.

.../2

*Budget 2025* is meeting the challenge of the cost of living by helping families keep more money in their pockets with lower personal income taxes and continuing investments in education and health care. I look forward to working together over the next year as we build strong and vibrant communities that make Alberta the best place in Canada to live, work, and raise a family.

Sincerely,

A handwritten signature in black ink that reads "Ric McIver". The signature is written in a cursive, flowing style.

Ric McIver  
Minister

Attachments:

1. Education Property Tax Fact Sheet (2025)
2. Education Property Tax Comparison Report (2025)



# 2025 Education Property Tax Requisition Comparison Report

Municipality	Residential / Farm Land Requisition			Non-Residential Requisition			Total Education Requisition		
	2024	2025	% Change	2024	2025	% Change	2024	2025	% Change
<b>City</b>									
City of Airdrie	\$32,676,721	\$40,805,954	25%	\$7,511,823	\$8,908,827	19%	\$40,188,545	\$49,714,781	24%
City of Beaumont	\$8,754,927	\$10,279,535	17%	\$941,561	\$1,075,964	14%	\$9,696,488	\$11,355,500	17%
City of Brooks	\$2,922,626	\$3,197,756	9%	\$1,245,129	\$1,331,680	7%	\$4,167,755	\$4,529,436	9%
City of Calgary	\$662,592,617	\$790,698,938	19%	\$218,956,754	\$246,642,379	13%	\$881,549,371	\$1,037,341,317	18%
City of Camrose	\$5,706,740	\$6,369,265	12%	\$2,395,051	\$2,602,544	9%	\$8,101,791	\$8,971,809	11%
City of Chestermere	\$12,471,769	\$16,199,231	30%	\$898,257	\$1,100,498	23%	\$13,370,026	\$17,299,728	29%
City of Cold Lake	\$4,333,490	\$4,965,053	15%	\$2,250,679	\$2,494,154	11%	\$6,584,170	\$7,459,208	13%
City of Edmonton	\$376,410,720	\$411,115,425	9%	\$152,709,073	\$164,041,580	7%	\$529,119,793	\$575,157,005	9%
City of Fort Saskatchewan	\$10,595,208	\$11,991,264	13%	\$4,936,892	\$5,538,948	12%	\$15,532,100	\$17,530,212	13%
City of Grande Prairie	\$18,324,596	\$20,103,995	10%	\$11,818,731	\$12,679,645	7%	\$30,143,327	\$32,783,641	9%
City of Lacombe	\$4,114,518	\$4,683,149	14%	\$1,315,723	\$1,546,049	18%	\$5,430,241	\$6,229,198	15%
City of Leduc	\$12,014,226	\$13,877,339	16%	\$8,093,219	\$9,565,323	18%	\$20,107,445	\$23,442,662	17%
City of Lethbridge	\$32,216,642	\$36,528,257	13%	\$11,640,476	\$13,377,829	15%	\$43,857,118	\$49,906,086	14%
City of Lloydminster	\$5,541,443	\$6,079,283	10%	\$4,042,364	\$4,433,079	10%	\$9,583,808	\$10,512,362	10%
City of Medicine Hat	\$20,260,317	\$22,491,557	11%	\$6,535,656	\$7,437,516	14%	\$26,795,973	\$29,929,073	12%
City of Red Deer	\$30,998,165	\$34,713,671	12%	\$14,008,329	\$15,291,018	9%	\$45,006,494	\$50,004,689	11%
City of Spruce Grove	\$14,515,474	\$16,553,065	14%	\$4,551,525	\$5,171,599	14%	\$19,066,999	\$21,724,664	14%
City of St. Albert	\$30,468,863	\$33,797,441	11%	\$7,729,758	\$8,571,041	11%	\$38,198,621	\$42,368,481	11%
City of Wetaskiwin	\$2,649,107	\$2,926,303	10%	\$1,333,280	\$1,436,688	8%	\$3,982,386	\$4,362,991	10%
<b>Specialized Municipality</b>									
Lac La Biche County	\$3,402,910	\$3,748,401	10%	\$6,876,399	\$7,598,780	11%	\$10,279,309	\$11,347,181	10%
Mackenzie County	\$3,268,046	\$3,728,460	14%	\$3,460,652	\$3,759,748	9%	\$6,728,698	\$7,488,208	11%
Municipality of Crowsnest Pass	\$2,845,014	\$3,415,101	20%	\$652,417	\$728,785	12%	\$3,497,431	\$4,143,885	18%
Municipality of Jasper	\$2,897,656	\$3,244,828	12%	\$2,870,879	\$3,435,565	20%	\$5,768,534	\$6,680,393	16%
Regional Municipality of Wood Buffalo	\$25,588,211	\$26,818,348	5%	\$44,973,467	\$49,007,432	9%	\$70,561,678	\$75,825,781	7%
Strathcona County	\$49,559,018	\$55,303,202	12%	\$23,807,109	\$27,576,981	16%	\$73,366,127	\$82,880,183	13%
<b>Municipal District</b>									
Athabasca County	\$2,968,750	\$3,314,562	12%	\$2,935,244	\$3,141,602	7%	\$5,903,993	\$6,456,165	9%
Beaver County	\$2,127,932	\$2,369,081	11%	\$1,707,543	\$1,847,370	8%	\$3,835,475	\$4,216,451	10%
Big Lakes County	\$1,588,207	\$1,819,359	15%	\$3,445,321	\$3,862,452	12%	\$5,033,528	\$5,681,811	13%
Birch Hills County	\$297,581	\$326,293	10%	\$478,049	\$478,783	0%	\$775,630	\$805,076	4%
Brazeau County	\$2,737,950	\$3,083,062	13%	\$7,336,337	\$8,195,680	12%	\$10,074,287	\$11,278,741	12%
Camrose County	\$3,797,777	\$4,261,631	12%	\$2,090,341	\$2,274,726	9%	\$5,888,118	\$6,536,357	11%
Cardston County	\$1,685,667	\$2,104,898	25%	\$341,693	\$386,567	13%	\$2,027,360	\$2,491,465	23%
Clear Hills County	\$546,825	\$629,296	15%	\$2,559,575	\$2,776,630	8%	\$3,106,401	\$3,405,926	10%
Clearwater County	\$5,085,847	\$5,911,264	16%	\$14,021,592	\$15,701,105	12%	\$18,995,973	\$21,612,368	14%
County of Barrhead No. 11	\$2,124,431	\$2,333,529	10%	\$637,472	\$775,048	22%	\$2,761,903	\$3,108,577	13%
County of Forty Mile No. 8	\$1,326,654	\$1,432,634	8%	\$879,141	\$885,612	1%	\$2,205,795	\$2,318,247	5%
County of Grande Prairie No. 1	\$11,607,927	\$12,861,368	11%	\$14,419,704	\$15,807,044	10%	\$26,027,632	\$28,668,412	10%
County of Minburn No. 27	\$1,056,824	\$1,171,345	11%	\$1,367,655	\$1,508,893	10%	\$2,424,478	\$2,680,238	11%
County of Newell	\$2,636,382	\$3,011,645	14%	\$9,258,318	\$10,054,070	9%	\$11,894,699	\$13,065,715	10%

Requisitions are actuals, subject to revision

Classification: Public

### 2025 Education Property Tax Requisition Comparison Report

Municipality	Residential / Farm Land Requisition			Non-Residential Requisition			Total Education Requisition		
	2024	2025	% Change	2024	2025	% Change	2024	2025	% Change
County of Northern Lights	\$1,163,594	\$1,318,339	13%	\$2,357,154	\$2,465,897	5%	\$3,520,748	\$3,784,236	7%
County of Paintearth No. 18	\$607,198	\$674,528	11%	\$1,518,731	\$1,640,601	8%	\$2,125,929	\$2,315,129	9%
County of St. Paul No. 19	\$2,716,097	\$3,023,206	11%	\$1,675,231	\$1,820,102	9%	\$4,391,327	\$4,843,307	10%
County of Stettler No. 6	\$2,178,165	\$2,506,532	15%	\$1,969,009	\$2,155,166	9%	\$4,147,174	\$4,661,699	12%
County of Two Hills No. 21	\$1,128,952	\$1,267,303	12%	\$538,400	\$567,641	5%	\$1,667,352	\$1,834,944	10%
County of Vermilion River	\$3,105,239	\$3,504,031	13%	\$3,607,692	\$3,922,259	9%	\$6,712,931	\$7,426,290	11%
County of Warner No. 5	\$1,377,310	\$1,576,481	14%	\$763,665	\$831,683	9%	\$2,140,976	\$2,408,164	12%
County of Wetaskiwin No. 10	\$5,534,040	\$6,361,900	15%	\$2,571,375	\$2,697,651	5%	\$8,105,416	\$9,059,550	12%
Cypress County	\$4,164,065	\$4,756,597	14%	\$9,165,422	\$9,980,926	9%	\$13,329,487	\$14,737,523	11%
Flagstaff County	\$1,385,419	\$1,524,706	10%	\$2,296,911	\$2,465,257	7%	\$3,682,330	\$3,989,962	8%
Foothills County	\$20,718,315	\$24,817,686	20%	\$4,016,897	\$4,479,153	12%	\$24,735,212	\$29,296,839	18%
Kneehill County	\$1,919,588	\$2,234,421	16%	\$3,653,309	\$4,034,251	10%	\$5,572,896	\$6,268,673	12%
Lac Ste. Anne County	\$4,767,410	\$5,334,125	12%	\$1,299,875	\$1,435,830	10%	\$6,067,284	\$6,769,955	12%
Lacombe County	\$5,610,186	\$6,213,691	11%	\$7,250,909	\$7,833,466	8%	\$12,861,095	\$14,047,157	9%
Lamont County	\$1,559,287	\$1,727,462	11%	\$1,763,676	\$1,958,153	11%	\$3,322,963	\$3,685,614	11%
Leduc County	\$8,159,017	\$9,442,769	16%	\$20,320,932	\$23,628,449	16%	\$28,479,949	\$33,071,219	16%
Lethbridge County	\$3,698,818	\$4,187,551	13%	\$2,643,677	\$2,963,143	12%	\$6,342,496	\$7,150,694	13%
Mountain View County	\$7,735,673	\$9,098,245	18%	\$6,284,415	\$6,923,038	10%	\$14,020,087	\$16,021,283	14%
Municipal District of Acadia No. 34	\$184,219	\$198,106	8%	\$38,429	\$47,746	24%	\$222,648	\$245,852	10%
Municipal District of Bighorn No. 8	\$1,805,415	\$2,140,349	19%	\$1,755,884	\$2,030,637	16%	\$3,561,299	\$4,170,986	17%
Municipal District of Bonnyville No. 87	\$5,005,435	\$5,676,433	13%	\$12,176,155	\$13,366,783	10%	\$17,181,590	\$19,043,216	11%
Municipal District of Fairview No. 136	\$515,720	\$547,243	6%	\$453,223	\$504,090	11%	\$968,943	\$1,051,332	9%
Municipal District of Greenview No. 16	\$2,854,277	\$3,296,919	16%	\$29,122,178	\$32,658,178	12%	\$31,976,455	\$35,955,097	12%
Municipal District of Lesser Slave River No. 124	\$1,442,011	\$1,582,612	10%	\$2,611,656	\$3,016,477	16%	\$4,053,667	\$4,599,089	13%
Municipal District of Opportunity No. 17	\$682,373	\$734,631	8%	\$8,299,570	\$9,291,968	12%	\$8,981,943	\$10,026,599	12%
Municipal District of Peace No. 135	\$487,302	\$551,075	13%	\$436,111	\$439,013	1%	\$923,413	\$990,088	7%
Municipal District of Pincher Creek No. 9	\$1,935,495	\$2,306,550	19%	\$1,234,671	\$1,355,159	10%	\$3,170,165	\$3,661,708	16%
Municipal District of Provost No. 52	\$774,826	\$846,255	9%	\$4,135,144	\$4,529,243	10%	\$4,909,970	\$5,375,497	9%
Municipal District of Ranchland No. 66	\$69,910	\$79,213	13%	\$562,190	\$607,009	8%	\$632,100	\$686,222	9%
Municipal District of Smoky River No. 130	\$627,528	\$708,827	13%	\$820,142	\$925,736	13%	\$1,447,670	\$1,634,563	13%
Municipal District of Spirit River No. 133	\$218,076	\$247,068	13%	\$436,310	\$556,133	27%	\$654,387	\$803,201	23%
Municipal District of Taber	\$2,461,834	\$2,939,243	19%	\$2,977,866	\$3,271,695	10%	\$5,439,700	\$6,210,938	14%
Municipal District of Wainwright No. 61	\$1,870,314	\$2,036,211	9%	\$4,439,583	\$4,992,764	12%	\$6,309,897	\$7,028,975	11%
Municipal District of Willow Creek No. 26	\$2,481,124	\$3,018,965	22%	\$1,658,119	\$1,866,268	13%	\$4,139,243	\$4,885,234	18%
Northern Sunrise County	\$626,390	\$681,246	9%	\$4,598,306	\$4,984,628	8%	\$5,224,696	\$5,665,873	8%
Parkland County	\$18,079,142	\$20,338,767	12%	\$12,638,309	\$13,866,868	10%	\$30,717,451	\$34,205,635	11%
Ponoka County	\$4,744,959	\$5,612,733	18%	\$3,680,077	\$4,109,553	12%	\$8,425,035	\$9,722,286	15%
Red Deer County	\$10,558,882	\$12,203,080	16%	\$8,991,886	\$9,829,912	9%	\$19,550,768	\$22,032,992	13%
Rocky View County	\$38,920,613	\$47,862,361	23%	\$23,236,941	\$29,811,930	28%	\$62,157,553	\$77,674,291	25%
Saddle Hills County	\$513,541	\$657,511	28%	\$6,672,392	\$7,558,362	13%	\$7,185,933	\$8,215,873	14%
Smoky Lake County	\$1,043,840	\$1,209,203	16%	\$1,048,058	\$1,180,297	13%	\$2,091,898	\$2,389,500	14%
Starland County	\$616,057	\$713,053	16%	\$1,341,942	\$1,468,496	9%	\$1,957,998	\$2,181,548	11%
Sturgeon County	\$10,951,968	\$12,344,569	13%	\$9,175,271	\$10,047,558	10%	\$20,127,239	\$22,392,127	11%

Requisitions are actuals, subject to revision

Classification: Public

### 2025 Education Property Tax Requisition Comparison Report

Municipality	Residential / Farm Land Requisition			Non-Residential Requisition			Total Education Requisition		
	2024	2025	% Change	2024	2025	% Change	2024	2025	% Change
Thorhild County	\$1,143,781	\$1,245,132	9%	\$1,296,708	\$1,416,297	9%	\$2,440,489	\$2,661,429	9%
Vulcan County	\$2,024,349	\$2,444,881	21%	\$1,564,558	\$1,747,180	12%	\$3,588,907	\$4,192,061	17%
Westlock County	\$2,255,121	\$2,557,655	13%	\$564,510	\$633,448	12%	\$2,819,632	\$3,191,102	13%
Wheatland County	\$4,122,594	\$4,828,880	17%	\$6,645,007	\$7,303,042	10%	\$10,767,601	\$12,131,922	13%
Woodlands County	\$2,041,854	\$2,309,541	13%	\$3,290,161	\$3,692,933	12%	\$5,332,015	\$6,002,475	13%
Yellowhead County	\$4,577,378	\$4,859,162	6%	\$22,438,768	\$25,332,759	13%	\$27,016,146	\$30,191,921	12%
Town									
Town of Athabasca	\$673,705	\$737,486	9%	\$407,866	\$427,792	5%	\$1,081,571	\$1,165,279	8%
Town of Banff	\$5,452,073	\$6,139,710	13%	\$4,891,651	\$7,239,681	48%	\$10,343,724	\$13,379,391	29%
Town of Barrhead	\$974,653	\$1,089,113	12%	\$450,923	\$495,890	10%	\$1,425,576	\$1,585,002	11%
Town of Bashaw	\$156,921	\$181,407	16%	\$67,935	\$80,469	18%	\$224,856	\$261,876	16%
Town of Bassano	\$233,950	\$263,839	13%	\$113,893	\$138,615	22%	\$347,843	\$402,454	16%
Town of Beaverlodge	\$596,683	\$648,163	9%	\$244,276	\$272,598	12%	\$840,959	\$920,760	9%
Town of Bentley	\$250,394	\$276,434	10%	\$57,414	\$59,363	3%	\$307,809	\$335,797	9%
Town of Blackfalds	\$3,261,920	\$3,712,428	14%	\$611,935	\$706,756	15%	\$3,873,855	\$4,419,184	14%
Town of Bon Accord	\$385,872	\$408,266	6%	\$28,429	\$32,741	15%	\$414,300	\$441,007	6%
Town of Bonnyville	\$1,519,070	\$1,574,566	4%	\$1,317,668	\$1,376,262	4%	\$2,836,738	\$2,950,828	4%
Town of Bow Island	\$373,506	\$404,338	8%	\$183,991	\$206,498	12%	\$557,497	\$610,836	10%
Town of Bowden	\$271,677	\$305,287	12%	\$58,369	\$64,180	10%	\$330,046	\$369,467	12%
Town of Bruderheim	\$363,604	\$398,261	10%	\$70,745	\$78,521	11%	\$434,349	\$476,782	10%
Town of Calmar	\$618,465	\$672,762	9%	\$187,788	\$214,536	14%	\$806,253	\$887,298	10%
Town of Canmore	\$23,913,325	\$27,778,702	16%	\$6,438,454	\$7,999,686	24%	\$30,351,778	\$35,778,387	18%
Town of Cardston	\$898,811	\$997,958	11%	\$180,488	\$214,989	19%	\$1,079,299	\$1,212,947	12%
Town of Carstairs	\$1,910,780	\$2,235,333	17%	\$255,532	\$284,693	11%	\$2,166,312	\$2,520,025	16%
Town of Castor	\$162,370	\$181,011	11%	\$53,449	\$60,928	14%	\$215,819	\$241,939	12%
Town of Claresholm	\$1,069,376	\$1,246,100	17%	\$381,473	\$423,148	11%	\$1,450,849	\$1,669,249	15%
Town of Coaldale	\$2,761,332	\$3,260,084	18%	\$673,399	\$837,833	24%	\$3,434,732	\$4,097,917	19%
Town of Coalhurst	\$797,268	\$914,316	15%	\$55,482	\$61,675	11%	\$852,750	\$975,991	14%
Town of Cochrane	\$16,990,384	\$21,325,962	26%	\$2,577,223	\$2,880,699	12%	\$19,567,606	\$24,206,661	24%
Town of Coronation	\$142,829	\$158,116	11%	\$83,519	\$92,592	11%	\$226,348	\$250,708	11%
Town of Crossfield	\$1,389,235	\$1,697,192	22%	\$717,281	\$834,122	16%	\$2,106,516	\$2,531,315	20%
Town of Daysland	\$194,940	\$216,695	11%	\$28,246	\$29,904	6%	\$223,185	\$246,599	10%
Town of Devon	\$2,127,248	\$2,380,509	12%	\$492,293	\$524,496	7%	\$2,619,541	\$2,905,006	11%
Town of Diamond Valley	\$2,208,310	\$2,764,092	25%	\$316,360	\$364,689	15%	\$2,524,671	\$3,128,780	24%
Town of Didsbury	\$1,521,057	\$1,737,458	14%	\$307,636	\$356,979	16%	\$1,828,694	\$2,094,437	15%
Town of Drayton Valley	\$1,775,121	\$2,025,777	14%	\$1,714,259	\$1,921,015	12%	\$3,489,381	\$3,946,792	13%
Town of Drumheller	\$1,814,112	\$2,062,736	14%	\$877,638	\$995,066	13%	\$2,691,750	\$3,057,802	14%
Town of Eckville	\$247,955	\$267,636	8%	\$80,853	\$92,285	14%	\$328,809	\$359,921	9%
Town of Edson	\$2,243,943	\$2,441,048	9%	\$1,512,476	\$1,669,593	10%	\$3,756,419	\$4,110,641	9%
Town of Elk Point	\$269,770	\$281,227	4%	\$159,710	\$170,692	7%	\$429,480	\$451,919	5%
Town of Fairview	\$571,989	\$604,192	6%	\$250,629	\$275,678	10%	\$822,618	\$879,870	7%
Town of Falher	\$145,054	\$157,251	8%	\$100,790	\$111,257	10%	\$245,844	\$268,508	9%
Town of Fort Macleod	\$869,224	\$1,017,081	17%	\$526,464	\$608,171	16%	\$1,395,688	\$1,625,252	16%

Requisitions are actuals, subject to revision

Classification: Public



### 2025 Education Property Tax Requisition Comparison Report

Municipality	Residential / Farm Land Requisition			Non-Residential Requisition			Total Education Requisition		
	2024	2025	% Change	2024	2025	% Change	2024	2025	% Change
Town of Fox Creek	\$504,733	\$503,588	0%	\$576,444	\$575,761	0%	\$1,081,177	\$1,079,349	0%
Town of Gibbons	\$901,128	\$996,373	11%	\$118,711	\$146,924	24%	\$1,019,840	\$1,143,297	12%
Town of Grimshaw	\$538,354	\$569,588	6%	\$188,597	\$181,690	-4%	\$726,951	\$751,279	3%
Town of Hanna	\$429,952	\$492,715	15%	\$235,065	\$252,372	7%	\$665,017	\$745,087	12%
Town of Hardisty	\$174,968	\$189,827	8%	\$112,379	\$117,531	5%	\$287,348	\$307,358	7%
Town of High Level	\$647,561	\$745,421	15%	\$775,817	\$869,788	12%	\$1,423,378	\$1,615,209	13%
Town of High Prairie	\$463,008	\$507,551	10%	\$416,569	\$452,358	9%	\$879,577	\$959,909	9%
Town of High River	\$5,185,679	\$6,262,867	21%	\$1,258,625	\$1,425,533	13%	\$6,444,304	\$7,688,400	19%
Town of Hinton	\$2,903,719	\$3,248,988	12%	\$1,730,494	\$1,897,036	10%	\$4,634,213	\$5,146,024	11%
Town of Innisfail	\$2,163,212	\$2,454,357	13%	\$973,022	\$1,061,323	9%	\$3,136,234	\$3,515,680	12%
Town of Irricana	\$335,782	\$400,812	19%	\$31,470	\$33,800	7%	\$367,252	\$434,612	18%
Town of Killam	\$184,519	\$201,804	9%	\$87,769	\$90,729	3%	\$272,289	\$292,534	7%
Town of Lamont	\$348,707	\$392,648	13%	\$104,466	\$109,447	5%	\$453,173	\$502,095	11%
Town of Legal	\$316,271	\$333,739	6%	\$32,996	\$36,812	12%	\$349,267	\$370,551	6%
Town of Magrath	\$638,897	\$744,423	17%	\$62,836	\$73,655	17%	\$701,733	\$818,079	17%
Town of Manning	\$227,713	\$245,891	8%	\$104,782	\$117,904	13%	\$332,495	\$363,795	9%
Town of Mayerthorpe	\$198,045	\$211,689	7%	\$102,394	\$105,880	3%	\$300,440	\$317,569	6%
Town of McLennan	\$79,379	\$86,129	9%	\$36,440	\$43,818	20%	\$115,819	\$129,947	12%
Town of Milk River	\$163,614	\$199,252	22%	\$42,209	\$48,759	16%	\$205,823	\$248,011	20%
Town of Millet	\$515,036	\$568,429	10%	\$129,356	\$168,955	31%	\$644,392	\$737,384	14%
Town of Morinville	\$3,097,155	\$3,500,557	13%	\$694,330	\$753,169	8%	\$3,791,484	\$4,253,725	12%
Town of Mundare	\$217,819	\$239,213	10%	\$52,965	\$56,443	7%	\$270,784	\$295,655	9%
Town of Nanton	\$691,299	\$847,683	23%	\$227,315	\$273,998	21%	\$918,614	\$1,121,681	22%
Town of Nobleford	\$346,672	\$414,409	20%	\$146,866	\$178,593	22%	\$493,538	\$593,002	20%
Town of Okotoks	\$13,779,201	\$17,010,168	23%	\$2,967,871	\$3,560,904	20%	\$16,747,072	\$20,571,072	23%
Town of Olds	\$3,184,858	\$3,750,666	18%	\$1,465,506	\$1,468,898	0%	\$4,650,364	\$5,219,563	12%
Town of Onoway	\$216,104	\$239,271	11%	\$140,242	\$134,295	-4%	\$356,346	\$373,566	5%
Town of Oyen	\$180,943	\$199,680	10%	\$81,592	\$101,503	24%	\$262,536	\$301,184	15%
Town of Peace River	\$1,662,202	\$1,750,544	5%	\$1,006,007	\$1,040,072	3%	\$2,668,209	\$2,790,616	5%
Town of Penhold	\$1,021,712	\$1,143,774	12%	\$152,701	\$180,175	18%	\$1,174,413	\$1,323,950	13%
Town of Picture Butte	\$472,143	\$557,869	18%	\$151,248	\$177,088	17%	\$623,390	\$734,957	18%
Town of Pincher Creek	\$973,274	\$1,189,883	22%	\$469,681	\$561,301	20%	\$1,442,955	\$1,751,185	21%
Town of Ponoka	\$1,776,801	\$1,986,442	12%	\$725,492	\$786,222	8%	\$2,502,293	\$2,772,664	11%
Town of Provost	\$364,151	\$391,494	8%	\$246,407	\$269,682	9%	\$610,558	\$661,176	8%
Town of Rainbow Lake	\$40,982	\$44,887	10%	\$49,354	\$52,583	7%	\$90,336	\$97,471	8%
Town of Raymond	\$992,896	\$1,174,077	18%	\$107,995	\$121,051	12%	\$1,100,891	\$1,295,127	18%
Town of Redcliff	\$1,554,017	\$1,733,801	12%	\$787,411	\$868,553	10%	\$2,341,428	\$2,602,354	11%
Town of Redwater	\$534,777	\$576,910	8%	\$338,658	\$353,488	4%	\$873,435	\$930,397	7%
Town of Rimbey	\$613,977	\$679,488	11%	\$309,420	\$355,264	15%	\$923,397	\$1,034,751	12%
Town of Rocky Mountain House	\$1,808,759	\$2,047,210	13%	\$1,064,113	\$1,167,426	10%	\$2,872,872	\$3,214,636	12%
Town of Sedgewick	\$183,204	\$198,272	8%	\$69,687	\$75,688	9%	\$252,891	\$273,960	8%
Town of Sexsmith	\$681,162	\$748,870	10%	\$192,410	\$203,172	6%	\$873,572	\$952,043	9%
Town of Slave Lake	\$1,629,791	\$1,796,707	10%	\$949,735	\$1,018,839	7%	\$2,579,526	\$2,815,547	9%
Town of Smoky Lake	\$197,093	\$223,157	13%	\$74,691	\$84,708	13%	\$271,784	\$307,865	13%

Requisitions are actuals, subject to revision

Classification: Public

### 2025 Education Property Tax Requisition Comparison Report

Municipality	Residential / Farm Land Requisition			Non-Residential Requisition			Total Education Requisition		
	2024	2025	% Change	2024	2025	% Change	2024	2025	% Change
Town of Spirit River	\$166,509	\$176,441	6%	\$75,363	\$81,040	8%	\$241,873	\$257,481	6%
Town of St. Paul	\$1,260,430	\$1,341,698	6%	\$627,699	\$694,064	11%	\$1,888,129	\$2,035,762	8%
Town of Stavely	\$141,229	\$168,982	20%	\$44,882	\$41,993	-6%	\$186,111	\$210,974	13%
Town of Stettler	\$1,456,021	\$1,633,399	12%	\$903,555	\$1,034,464	14%	\$2,359,576	\$2,667,863	13%
Town of Stony Plain	\$6,375,406	\$7,276,531	14%	\$1,940,532	\$2,210,709	14%	\$8,315,938	\$9,487,240	14%
Town of Strathmore	\$4,757,855	\$5,848,969	23%	\$1,195,802	\$1,403,028	17%	\$5,953,657	\$7,251,997	22%
Town of Sundre	\$837,834	\$949,140	13%	\$370,402	\$384,838	4%	\$1,208,236	\$1,333,977	10%
Town of Swan Hills	\$122,536	\$137,620	12%	\$111,045	\$104,896	-6%	\$233,581	\$242,516	4%
Town of Sylvan Lake	\$6,166,325	\$6,809,225	10%	\$1,282,671	\$1,431,680	12%	\$7,448,997	\$8,240,905	11%
Town of Taber	\$2,179,692	\$2,467,407	13%	\$1,012,489	\$1,188,322	17%	\$3,192,181	\$3,655,730	15%
Town of Thorsby	\$207,956	\$223,229	7%	\$80,840	\$81,266	1%	\$288,796	\$304,495	5%
Town of Three Hills	\$714,532	\$807,504	13%	\$232,148	\$278,749	20%	\$946,680	\$1,086,252	15%
Town of Tofield	\$505,708	\$546,545	8%	\$201,851	\$220,732	9%	\$707,560	\$767,277	8%
Town of Trochu	\$187,250	\$219,112	17%	\$63,669	\$74,608	17%	\$250,919	\$293,719	17%
Town of Two Hills	\$159,745	\$173,598	9%	\$52,490	\$56,602	8%	\$212,235	\$230,200	8%
Town of Valleyview	\$348,413	\$396,108	14%	\$293,412	\$342,250	17%	\$641,826	\$738,359	15%
Town of Vauxhall	\$204,637	\$242,223	18%	\$66,674	\$80,528	21%	\$271,311	\$322,750	19%
Town of Vegreville	\$1,270,223	\$1,398,415	10%	\$714,209	\$784,479	10%	\$1,984,432	\$2,182,894	10%
Town of Vermilion	\$1,048,118	\$1,148,399	10%	\$657,967	\$722,215	10%	\$1,706,085	\$1,870,614	10%
Town of Viking	\$181,712	\$199,249	10%	\$82,710	\$87,407	6%	\$264,422	\$286,656	8%
Town of Vulcan	\$506,701	\$581,657	15%	\$155,929	\$176,348	13%	\$662,630	\$758,004	14%
Town of Wainwright	\$1,647,086	\$1,773,328	8%	\$952,095	\$1,028,317	8%	\$2,599,181	\$2,801,645	8%
Town of Wembley	\$366,635	\$404,951	10%	\$140,603	\$160,702	14%	\$507,238	\$565,653	12%
Town of Westlock	\$1,062,898	\$1,175,208	11%	\$681,121	\$727,190	7%	\$1,744,019	\$1,902,398	9%
Town of Whitecourt	\$2,736,404	\$2,959,682	8%	\$2,275,620	\$2,535,055	11%	\$5,012,024	\$5,494,737	10%
Village									
Alberta Beach	\$460,851	\$493,842	7%	\$42,315	\$50,665	20%	\$503,166	\$544,506	8%
Village of Acme	\$137,589	\$166,973	21%	\$41,136	\$48,261	17%	\$178,726	\$215,235	20%
Village of Alix	\$157,002	\$184,519	18%	\$59,747	\$69,550	16%	\$216,748	\$254,068	17%
Village of Alliance	\$17,468	\$18,792	8%	\$10,788	\$11,391	6%	\$28,256	\$30,183	7%
Village of Amisk	\$29,421	\$30,500	4%	\$5,498	\$6,820	24%	\$34,919	\$37,319	7%
Village of Andrew	\$67,963	\$69,512	2%	\$20,820	\$23,248	12%	\$88,783	\$92,760	4%
Village of Arrowwood	\$34,108	\$42,675	25%	\$11,414	\$14,358	26%	\$45,523	\$57,032	25%
Village of Barnwell	\$263,431	\$293,199	11%	\$17,378	\$19,299	11%	\$280,809	\$312,499	11%
Village of Barons	\$47,345	\$65,841	39%	\$9,814	\$13,829	41%	\$57,159	\$79,670	39%
Village of Bawlf	\$84,230	\$92,378	10%	\$6,686	\$7,387	10%	\$90,916	\$99,765	10%
Village of Beiseker	\$204,158	\$245,284	20%	\$109,271	\$118,304	8%	\$313,430	\$363,588	16%
Village of Berwyn	\$73,925	\$75,735	2%	\$12,354	\$13,080	6%	\$86,279	\$88,815	3%
Village of Big Valley	\$57,540	\$64,384	12%	\$19,214	\$22,565	17%	\$76,754	\$86,948	13%
Village of Bittern Lake	\$57,647	\$62,677	9%	\$8,552	\$9,357	9%	\$66,199	\$72,035	9%
Village of Boyle	\$156,074	\$168,100	8%	\$96,197	\$105,289	9%	\$252,271	\$273,389	8%
Village of Breton	\$106,294	\$121,299	14%	\$41,573	\$44,422	7%	\$147,867	\$165,721	12%
Village of Carbon	\$102,293	\$117,893	15%	\$11,484	\$12,220	6%	\$113,778	\$130,113	14%

Requisitions are actuals, subject to revision

Classification: Public

### 2025 Education Property Tax Requisition Comparison Report

Municipality	Residential / Farm Land Requisition			Non-Residential Requisition			Total Education Requisition		
	2024	2025	% Change	2024	2025	% Change	2024	2025	% Change
Village of Carmangay	\$48,404	\$58,953	22%	\$9,539	\$11,983	26%	\$57,943	\$70,936	22%
Village of Champion	\$59,751	\$87,219	46%	\$13,866	\$17,077	23%	\$73,617	\$104,296	42%
Village of Chauvin	\$40,059	\$42,816	7%	\$21,383	\$24,237	13%	\$61,443	\$67,053	9%
Village of Chipman	\$47,300	\$51,912	10%	\$16,261	\$17,871	10%	\$63,561	\$69,783	10%
Village of Clive	\$194,459	\$214,050	10%	\$12,322	\$13,636	11%	\$206,781	\$227,686	10%
Village of Clyde	\$77,161	\$86,993	13%	\$9,832	\$9,822	0%	\$86,993	\$96,815	11%
Village of Consort	\$105,248	\$116,274	10%	\$62,836	\$70,117	12%	\$168,084	\$186,390	11%
Village of Coutts	\$37,085	\$42,040	13%	\$35,530	\$42,011	18%	\$72,615	\$84,051	16%
Village of Cowley	\$43,135	\$54,146	26%	\$15,417	\$17,089	11%	\$58,553	\$71,236	22%
Village of Cremona	\$111,326	\$122,020	10%	\$26,963	\$29,397	9%	\$138,289	\$151,416	9%
Village of Czar	\$25,085	\$28,713	14%	\$7,748	\$10,967	42%	\$32,833	\$39,680	21%
Village of Delburne	\$206,633	\$220,020	6%	\$43,829	\$42,883	-2%	\$250,463	\$262,903	5%
Village of Delia	\$34,212	\$39,445	15%	\$12,863	\$13,637	6%	\$47,075	\$53,082	13%
Village of Donalda	\$31,630	\$35,086	11%	\$5,958	\$6,579	10%	\$37,588	\$41,665	11%
Village of Donnelly	\$49,360	\$54,966	11%	\$8,044	\$8,796	9%	\$57,403	\$63,763	11%
Village of Duchess	\$250,760	\$270,911	8%	\$35,705	\$40,972	15%	\$286,465	\$311,883	9%
Village of Edberg	\$20,445	\$23,160	13%	\$1,265	\$1,514	20%	\$21,711	\$24,674	14%
Village of Edgerton	\$63,662	\$67,381	6%	\$14,104	\$15,890	13%	\$77,766	\$83,271	7%
Village of Elnora	\$50,896	\$60,071	18%	\$10,459	\$10,647	2%	\$61,356	\$70,718	15%
Village of Empress	\$18,516	\$19,581	6%	\$6,651	\$6,571	-1%	\$25,167	\$26,152	4%
Village of Foremost	\$110,123	\$132,442	20%	\$43,240	\$50,545	17%	\$153,362	\$182,987	19%
Village of Forestburg	\$148,651	\$162,777	10%	\$37,102	\$38,679	4%	\$185,753	\$201,456	8%
Village of Girouxville	\$33,288	\$36,433	9%	\$10,115	\$10,327	2%	\$43,402	\$46,761	8%
Village of Glendon	\$92,993	\$99,084	7%	\$17,999	\$19,290	7%	\$110,993	\$118,375	7%
Village of Glenwood	\$75,308	\$90,453	20%	\$9,190	\$9,732	6%	\$84,497	\$100,185	19%
Village of Halkirk	\$14,685			\$6,513			\$21,198		
Village of Hay Lakes	\$123,952	\$139,060	12%	\$7,320	\$9,248	26%	\$131,272	\$148,308	13%
Village of Heisler	\$17,266	\$19,492	13%	\$5,182	\$5,825	12%	\$22,448	\$25,316	13%
Village of Hill Spring	\$54,414	\$60,440	11%	\$4,211	\$4,750	13%	\$58,625	\$65,190	11%
Village of Hines Creek	\$34,209	\$35,332	3%	\$20,015	\$21,640	8%	\$54,224	\$56,972	5%
Village of Holden	\$44,248	\$50,417	14%	\$32,543	\$34,896	7%	\$76,791	\$85,313	11%
Village of Hughenden	\$26,637	\$28,084	5%	\$5,880	\$6,641	13%	\$32,517	\$34,725	7%
Village of Hussar	\$30,710	\$35,112	14%	\$10,012	\$11,784	18%	\$40,723	\$46,896	15%
Village of Innisfree	\$24,567	\$28,117	14%	\$11,944	\$13,608	14%	\$36,510	\$41,725	14%
Village of Irma	\$94,487	\$103,158	9%	\$28,797	\$30,672	7%	\$123,284	\$133,830	9%
Village of Kitscoty	\$211,072	\$223,850	6%	\$26,720	\$29,034	9%	\$237,792	\$252,884	6%
Village of Linden	\$168,416	\$200,029	19%	\$65,604	\$71,363	9%	\$234,019	\$271,392	16%
Village of Lomond	\$26,897	\$31,081	16%	\$8,775	\$9,843	12%	\$35,672	\$40,924	15%
Village of Longview	\$133,296	\$157,316	18%	\$48,454	\$52,257	8%	\$181,750	\$209,574	15%
Village of Loughheed	\$32,223	\$34,916	8%	\$18,238	\$19,609	8%	\$50,461	\$54,525	8%
Village of Mannville	\$107,608	\$117,702	9%	\$32,971	\$35,179	7%	\$140,579	\$152,881	9%
Village of Marwayne	\$92,007	\$103,214	12%	\$16,706	\$19,408	16%	\$108,714	\$122,622	13%
Village of Milo	\$23,853	\$29,740	25%	\$12,798	\$14,627	14%	\$36,651	\$44,367	21%

Requisitions are actuals, subject to revision

Classification: Public



### 2025 Education Property Tax Requisition Comparison Report

Municipality	Residential / Farm Land Requisition			Non-Residential Requisition			Total Education Requisition		
	2024	2025	% Change	2024	2025	% Change	2024	2025	% Change
Village of Morrin	\$34,991	\$39,171	12%	\$4,515	\$5,360	19%	\$39,506	\$44,531	13%
Village of Munson	\$43,099	\$48,199	12%	\$4,950	\$5,534	12%	\$48,050	\$53,733	12%
Village of Myrnam	\$36,939	\$39,970	8%	\$5,457	\$6,587	21%	\$42,396	\$46,558	10%
Village of Nampa	\$57,385	\$59,957	4%	\$67,853	\$71,282	5%	\$125,238	\$131,239	5%
Village of Paradise Valley	\$21,596	\$23,767	10%	\$5,095	\$5,744	13%	\$26,691	\$29,511	11%
Village of Rockyford	\$64,255	\$72,280	12%	\$23,645	\$26,088	10%	\$87,900	\$98,368	12%
Village of Rosalind	\$31,128	\$35,286	13%	\$9,256	\$10,292	11%	\$40,384	\$45,578	13%
Village of Rosemary	\$73,179	\$77,918	6%	\$8,384	\$10,011	19%	\$81,563	\$87,929	8%
Village of Rycroft	\$88,634	\$91,295	3%	\$94,487	\$99,226	5%	\$183,121	\$190,520	4%
Village of Ryley	\$65,801	\$71,484	9%	\$43,682	\$48,904	12%	\$109,483	\$120,388	10%
Village of Spring Lake	\$373,548	\$424,975	14%	\$11,986	\$13,638	14%	\$385,534	\$438,613	14%
Village of Standard	\$80,933	\$93,175	15%	\$52,180	\$55,237	6%	\$133,113	\$148,411	11%
Village of Stirling	\$294,781	\$346,258	17%	\$14,241	\$16,389	15%	\$309,022	\$362,647	17%
Village of Veteran	\$23,395	\$26,027	11%	\$9,571	\$10,370	8%	\$32,966	\$36,397	10%
Village of Vilna	\$28,541	\$30,806	8%	\$7,727	\$8,895	15%	\$36,268	\$39,701	9%
Village of Warburg	\$122,242	\$135,895	11%	\$41,969	\$44,792	7%	\$164,211	\$180,687	10%
Village of Warner	\$65,587	\$80,346	23%	\$16,418	\$20,411	24%	\$82,005	\$100,757	23%
Village of Waskatenau	\$40,856	\$43,870	7%	\$6,749	\$7,746	15%	\$47,605	\$51,617	8%
Village of Youngstown	\$22,650	\$24,802	10%	\$7,765	\$8,701	12%	\$30,415	\$33,503	10%
Summer Village									
Summer Village of Argentia Beach	\$233,387	\$266,905	14%	\$1,180	\$1,326	12%	\$234,567	\$268,232	14%
Summer Village of Betula Beach	\$80,456	\$96,947	20%	\$215	\$239	11%	\$80,671	\$97,187	20%
Summer Village of Birch Cove	\$36,311	\$41,937	15%	\$207	\$230	11%	\$36,518	\$42,167	15%
Summer Village of Birchcliff	\$509,079	\$572,211	12%	\$7,128	\$7,674	8%	\$516,207	\$579,885	12%
Summer Village of Bondiss	\$170,894	\$194,473	14%	\$2,877	\$3,402	18%	\$173,770	\$197,875	14%
Summer Village of Bonnyville Beach	\$68,232	\$72,907	7%	\$667	\$733	10%	\$68,899	\$73,641	7%
Summer Village of Burnstick Lake	\$53,970	\$76,288	41%	\$131	\$150	14%	\$54,101	\$76,437	41%
Summer Village of Castle Island	\$35,579	\$37,112	4%	\$62	\$70	13%	\$35,641	\$37,182	4%
Summer Village of Crystal Springs	\$238,164	\$267,321	12%	\$1,208	\$1,341	11%	\$239,372	\$268,662	12%
Summer Village of Ghost Lake	\$126,210	\$156,277	24%	\$263	\$282	7%	\$126,472	\$156,559	24%
Summer Village of Golden Days	\$367,537	\$419,422	14%	\$3,258	\$3,258	0%	\$370,795	\$422,680	14%
Summer Village of Grandview	\$287,308	\$322,822	12%	\$1,076	\$1,222	14%	\$288,384	\$324,045	12%
Summer Village of Gull Lake	\$269,295	\$314,039	17%	\$4,504	\$5,412	20%	\$273,799	\$319,450	17%
Summer Village of Half Moon Bay	\$121,653	\$130,500	7%	\$157	\$180	14%	\$121,810	\$130,680	7%
Summer Village of Horseshoe Bay	\$42,270	\$45,515	8%	\$727	\$808	11%	\$42,997	\$46,323	8%
Summer Village of Island Lake	\$300,691	\$349,645	16%	\$2,611	\$3,237	24%	\$303,302	\$352,882	16%
Summer Village of Island Lake South	\$82,853	\$91,599	11%	\$408	\$456	12%	\$83,262	\$92,055	11%
Summer Village of Itaska Beach	\$124,501	\$137,429	10%	\$583	\$642	10%	\$125,084	\$138,070	10%
Summer Village of Jarvis Bay	\$490,062	\$575,535	17%	\$1,387	\$1,558	12%	\$491,449	\$577,092	17%
Summer Village of Kapasiwin	\$87,853	\$94,742	8%	\$317	\$347	9%	\$88,170	\$95,089	8%
Summer Village of Lakeview	\$46,084	\$55,272	20%	\$256	\$292	14%	\$46,340	\$55,564	20%
Summer Village of Larkspur	\$88,448	\$98,107	11%	\$220	\$240	9%	\$88,668	\$98,346	11%
Summer Village of Ma-Me-O Beach	\$272,676	\$287,565	5%	\$7,797	\$8,247	6%	\$280,473	\$295,811	5%

Requisitions are actuals, subject to revision

Classification: Public

### 2025 Education Property Tax Requisition Comparison Report

Municipality	Residential / Farm Land Requisition			Non-Residential Requisition			Total Education Requisition		
	2024	2025	% Change	2024	2025	% Change	2024	2025	% Change
Summer Village of Mewatha Beach	\$153,698	\$176,305	15%	\$916	\$1,152	26%	\$154,614	\$177,457	15%
Summer Village of Nakamun Park	\$110,355	\$125,086	13%	\$568	\$637	12%	\$110,923	\$125,723	13%
Summer Village of Norglenwold	\$600,456	\$702,346	17%	\$2,192	\$2,485	13%	\$602,648	\$704,831	17%
Summer Village of Norris Beach	\$97,746	\$106,415	9%	\$661	\$722	9%	\$98,407	\$107,137	9%
Summer Village of Parkland Beach	\$203,204	\$228,849	13%	\$9,298	\$10,332	11%	\$212,502	\$239,182	13%
Summer Village of Pelican Narrows	\$138,468	\$154,043	11%	\$1,162	\$1,279	10%	\$139,630	\$155,322	11%
Summer Village of Point Alison	\$65,116	\$69,073	6%	\$289	\$321	11%	\$65,405	\$69,394	6%
Summer Village of Poplar Bay	\$266,865	\$286,011	7%	\$1,487	\$1,644	11%	\$268,352	\$287,655	7%
Summer Village of Rochon Sands	\$162,437	\$176,078	8%	\$1,677	\$1,847	10%	\$164,113	\$177,926	8%
Summer Village of Ross Haven	\$163,226	\$181,804	11%	\$835	\$935	12%	\$164,061	\$182,739	11%
Summer Village of Sandy Beach	\$123,810	\$139,589	13%	\$2,364	\$2,708	15%	\$126,174	\$142,296	13%
Summer Village of Seba Beach	\$480,197	\$557,449	16%	\$13,885	\$15,546	12%	\$494,083	\$572,995	16%
Summer Village of Silver Beach	\$247,016	\$265,357	7%	\$755	\$839	11%	\$247,772	\$266,197	7%
Summer Village of Silver Sands	\$163,468	\$190,537	17%	\$4,717	\$5,376	14%	\$168,185	\$195,913	16%
Summer Village of South Baptiste	\$54,415	\$62,931	16%	\$2,889	\$3,115	8%	\$57,304	\$66,046	15%
Summer Village of South View	\$50,810	\$55,997	10%	\$498	\$552	11%	\$51,309	\$56,550	10%
Summer Village of Sunbreaker Cove	\$386,984	\$435,456	13%	\$613	\$681	11%	\$387,597	\$436,137	13%
Summer Village of Sundance Beach	\$169,430	\$187,637	11%	\$327	\$367	12%	\$169,757	\$188,004	11%
Summer Village of Sunrise Beach	\$75,973	\$85,126	12%	\$547	\$612	12%	\$76,520	\$85,738	12%
Summer Village of Sunset Beach	\$94,310	\$104,457	11%	\$575	\$646	12%	\$94,885	\$105,104	11%
Summer Village of Sunset Point	\$190,911	\$202,280	6%	\$727	\$811	12%	\$191,637	\$203,091	6%
Summer Village of Val Quentin	\$129,824	\$148,205	14%	\$1,098	\$1,223	11%	\$130,922	\$149,428	14%
Summer Village of Waiparous	\$97,209	\$125,505	29%	\$183	\$204	12%	\$97,391	\$125,708	29%
Summer Village of West Baptiste	\$98,465	\$116,564	18%	\$504	\$562	11%	\$98,969	\$117,126	18%
Summer Village of West Cove	\$152,266	\$163,052	7%	\$793	\$886	12%	\$153,059	\$163,939	7%
Summer Village of Whispering Hills	\$126,676	\$154,680	22%	\$1,096	\$1,890	72%	\$127,772	\$156,570	23%
Summer Village of White Sands	\$309,431	\$345,232	12%	\$2,257	\$2,512	11%	\$311,688	\$347,744	12%
Summer Village of Yellowstone	\$97,654	\$110,447	13%	\$629	\$707	12%	\$98,283	\$111,154	13%
Improvement District									
Improvement District No. 04 (Waterton)	\$486,959	\$557,367	14%	\$267,914	\$300,923	12%	\$754,873	\$858,290	14%
Improvement District No. 09 (Banff)	\$311,788	\$379,499	22%	\$2,732,751	\$3,522,788	29%	\$3,044,539	\$3,902,287	28%
Improvement District No. 12 (Jasper National Park)	\$15,812	\$18,047	14%	\$215,094	\$231,275	8%	\$230,906	\$249,323	8%
Improvement District No. 13 (Elk Island)	\$956	\$1,018	6%	\$22,334	\$23,454	5%	\$23,291	\$24,472	5%
Improvement District No. 24 (Wood Buffalo)	\$6,267	\$6,636	6%	\$3,913	\$4,363	11%	\$10,180	\$11,000	8%
Kananaskis Improvement District	\$179,885	\$208,069	16%	\$441,342	\$532,210	21%	\$621,228	\$740,278	19%
Special Area									
Special Areas Board	\$1,589,002	\$1,838,695	16%	\$8,984,038	\$9,707,515	8%	\$10,573,040	\$11,546,210	9%
Townsite									
Townsite of Redwood Meadows Administration Society	\$583,080	\$679,043	16%	\$0	\$0	0%	\$583,080	\$679,043	16%

Requisitions are actuals, subject to revision

Classification: Public



# Education Property Tax

## Fact Sheet

### Highlights of the 2025-26 provincial education property tax

Budget 2025 will see an increase to the education property tax rates after being frozen in 2024-25. The higher rates, along with rising property values and increased development, are expected to raise the education property tax requisition from \$2.7 billion in 2024-25 to \$3.1 billion in 2025-26.

The share of education operating costs funded by the education property tax will increase to 31.6 per cent in 2025-26, following historic lows of about 28 per cent in 2023-24 and 29.5 per cent in 2024-25. This will enhance Alberta's ability to fund school operations, leading to better educational outcomes as student enrolment continues to grow.

Education property taxes provide a stable source of revenue and equitable funding that supports K-12 education, including teachers' salaries, textbooks and classroom resources. They are not used to fund government operations, school capital costs or teachers' pensions.

Under the provincial funding model, all education property taxes are pooled by Alberta Education through the Alberta School Foundation Fund and distributed to public and separate school boards on an equal per-student basis.

### How education property tax is calculated for municipalities

All municipalities collect an equitable share of the provincial education property tax in proportion to their total taxable property assessments, which are equalized across the province. The equalization process ensures owners of properties of similar value and type across the province pay similar amounts of education property taxes. For more details on this process, refer to the [Guide to Equalized Assessment](https://www.municipalaffairs.alberta.ca/documents/as/guide_to_equalized_assessment.pdf) ([www.municipalaffairs.alberta.ca/documents/as/guide\\_to\\_equalized\\_assessment.pdf](https://www.municipalaffairs.alberta.ca/documents/as/guide_to_equalized_assessment.pdf)) on the Alberta website.

The provincial equalized assessment base used to determine education property taxes this year reflects 2023 property values.

In 2025, the education property tax will be calculated at a rate of \$2.72 per \$1,000 of the total residential/farmland equalized assessment value. The non-residential rate will be set at \$4.00 per \$1,000 of equalized assessment value. Most property owners will see a change to their education tax bill due to increasing mill rates and assessment values. Individual properties are taxed based on the local education property tax rate set by the municipality.

### How much Calgary and Edmonton contribute to education property tax

Based on this formula, Calgary taxpayers will contribute \$1.037 billion in education property tax in 2025. Edmonton taxpayers will contribute \$575 million in education property tax in 2025. Funding for Calgary and Edmonton school boards will be based on the published profiles expected to be released by the end of March 2025.

### Declaration of faith

The Canadian Constitution guarantees Roman Catholic citizens' minority rights to a separate education system. In communities with separate school jurisdictions, property owners can declare they are of the Roman Catholic faith, so their education property tax dollars can be directed to those separate school jurisdictions.

### Education system benefits everyone

Alberta's education system plays a crucial role in shaping a skilled workforce, driving economic growth and fostering the social well-being of individuals and the province as a whole. It serves as a cornerstone for personal and collective prosperity, benefiting all Albertans—regardless of age, marital status or parental responsibilities.

Questions about financial assistance for seniors or the Seniors Property Tax Deferral program can be directed to the Alberta Supports Contact Centre at 1-877-644-9992 (in Edmonton - 780-644-9992).